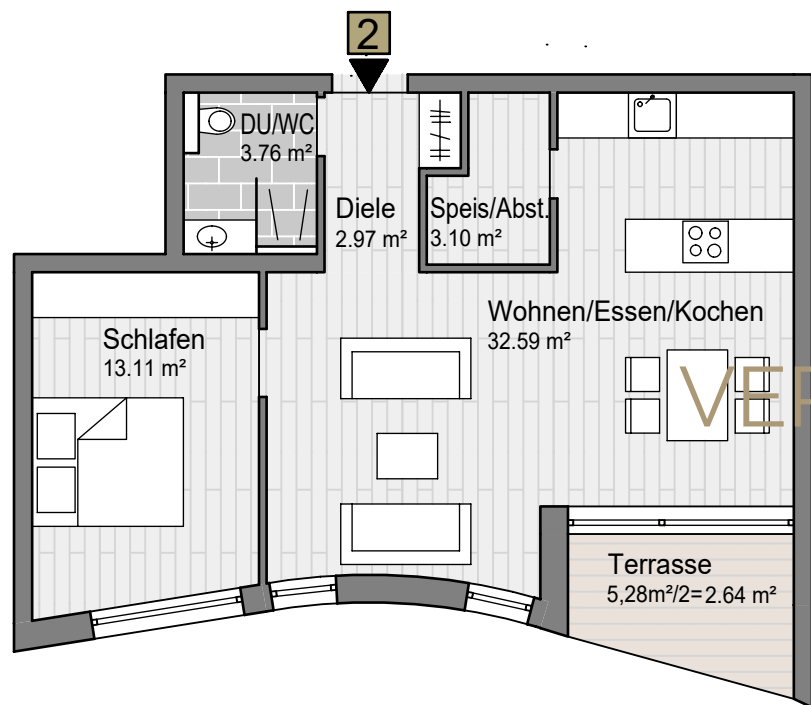
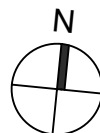
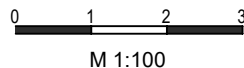


# 2,5 ZIMMER WOHNUNG

## ERDGESCHOSS • WOHNUNG 02



Stand 02.2021  
Unverbindliche Illustration. Alle Angaben ca. Werte ohne Gewähr



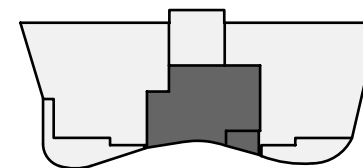
# URBAN.SKY

## NECKARWESTHEIM

WOHNFLÄCHE: ca. 58,18m<sup>2</sup>  
inkl. Terrasse



Abbildung ähnlich



**JOHANNES LAUKHUF**  
DESIGN

Wartbergstr. 68 74076 Heilbronn  
07131 / 97 36 000 info@laukhuf.de  
www.laukhuf.de